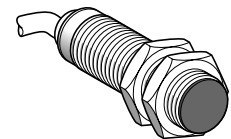
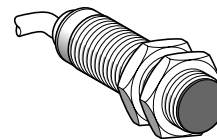
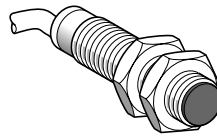
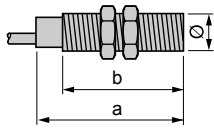


**Sensors flush mountable in support**



Lengths (mm):  
 a = Overall  
 b = Threaded or plain section

a = 50  
 b = 42  
 Ø = M12 x 1

a = 60  
 b = 51.5  
 Ø = M18 x 1

a = 60  
 b = 51.5  
 Ø = M18 x 1

	DC	DC	AC
Nominal sensing distance (Sn)	2 mm	5 mm	5 mm

**References**

3-wire ☒	PNP	NO	XT1 M12PA372	XT1 M18PA372	-
		NC	XT1 M12PB372	XT1 M18PB372	-
	NPN	NO	XT1 M12NA372	XT1 M18NA372	-
2-wire ☒		NO	-	-	XT1 M18FA262
		NC	-	-	XT1 M18FB262
Weight (kg)			0.065	0.120	0.120

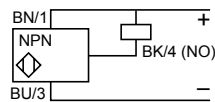
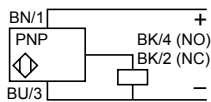
**Characteristics**

Connection	Pre-cabled, 3 x 0.34 mm <sup>2</sup> , length = 2 m		Pre-cabled, 2 x 0.34 mm <sup>2</sup> , length = 2 m
Degree of protection	Conforming to IEC 60529	IP 67	
Operating zone		0...1.44 mm	0...3.6 mm
Product certifications			
Repeat accuracy	0.1 of Sr		
Differential travel	0.2 of Sr		
Operating temperature	0...+ 50 °C with 60% relative humidity		- 25...+ 70 °C
Output state indication	Yellow LED		
Rated supply voltage	☒ 12...24 V		☒ 24...240 V (50/60 Hz)
Voltage limits (including ripple)	10...38 V		20...264 V (50/60 Hz)
Switching capacity	0...300 mA with overload and short-circuit protection		5...300 mA (1)
Voltage drop, closed state	2 V		5.5 V
Residual current, open state	-		1.5 mA / 120 V
Current consumption, no-load	10 mA		-
Maximum switching frequency	100 Hz		25 Hz
Delays	First-up	30 ms	
	Response	5 ms	
	Recovery	5 ms	

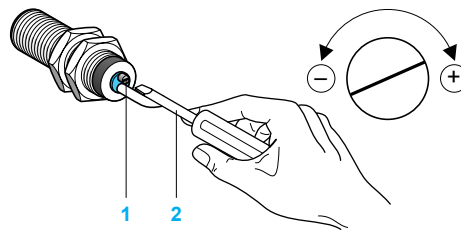
**Wiring schemes, sensitivity adjustment**

**3-wire ☒ , NO or NC output**

XT1 M12P372      XT1 M12NA372



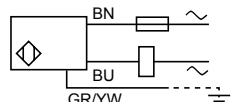
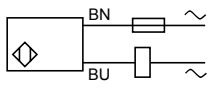
**Sensitivity adjustment (not available on sensors XT1 M12☒☒☒☒)**



- 1 Adjustment potentiometer
- 2 Adjustment using suitable screwdriver

**2-wire ☒ , NO or NC output**

XT1 M18F262      XT1 L32F262



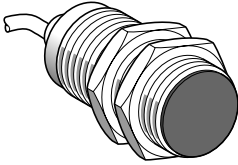
(1) These sensors do not incorporate overload or short-circuit protection and therefore, it is essential to connect a 0.4 A "quick-blow" fuse in series with the load (see page 37317/2).

# Capacitive proximity sensors

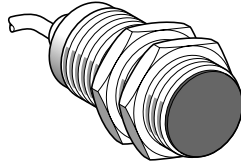
For detection of insulated materials

Cylindrical type. Metal case

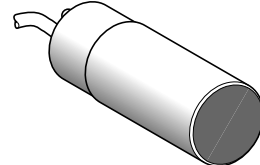
d.c. or a.c. supply



a = 60  
b = 51.5  
Ø = M30 x 1.5



a = 60  
b = 51.5  
Ø = M30 x 1.5

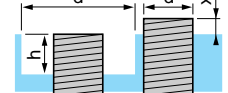
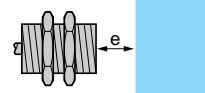
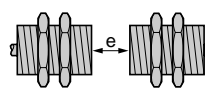
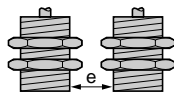


a = 80  
b = 60  
Ø = 32 plain

DC 10 mm	AC 10 mm	AC 15 mm
XT1 M30PA372	-	-
XT1 M30PB372	-	-
XT1 M30NA372	-	-
-	XT1 M30FA262	XT1 L32FA262
-	XT1 M30FB262	XT1 L32FB262
0.205	0.205	0.300
Pre-cabled, 3 x 0.34 mm <sup>2</sup> , length = 2 m	Pre-cabled, 2 x 0.34 mm <sup>2</sup> , length = 2 m	Pre-cabled, 3 x 0.34 mm <sup>2</sup> , length = 2 m
IP 67		IP 63
0...7.2 mm		0...10.8 mm
CE		
≤ 0.1 of Sr		
≤ 0.2 of Sr		
- 25...+ 70 °C		
Yellow LED		
~ 12...24 V	~ 24...240 V (50/60 Hz)	~ 110...220 V (50/60 Hz)
~ 10...38 V	~ 20...264 V (50/60 Hz)	~ 90...250 V (50/60 Hz)
0...300 mA with overload and short-circuit protection	5...300 mA (1)	15...250 mA (Ue = 110 V) (1) 15...150 mA (Ue = 220 V) (1)
≤ 2 V	≤ 5.5 V	≤ 9 V
-	≤ 1.5 mA / 120 V	≤ 7 mA
≤ 10 mA	-	-
100 Hz	25 Hz	10 Hz
≤ 30 ms	≤ 300 ms	≤ 300 ms
≤ 5 ms	≤ 50 ms	≤ 50 ms
≤ 5 ms	≤ 50 ms	≤ 15 ms

## Setting-up

Minimum mounting distances (mm)	Side by side	Face to face	Facing a metal object	Mounted in support
---------------------------------	--------------	--------------	-----------------------	--------------------



XT1 M12 flush mountable	e ≥ 0	e ≥ 15	e ≥ 15	d ≥ 12, h ≥ 0, x = 0
XT1 M18 flush mountable	e ≥ 0	e ≥ 30	e ≥ 30	d ≥ 18, h ≥ 0, x = 0
XT1 M30 flush mountable	e ≥ 0	e ≥ 60	e ≥ 60	d ≥ 30, h ≥ 0, x = 0
XT1 L32 flush mountable	e ≥ 0	e ≥ 100	e ≥ 100	d ≥ 32, h ≥ 0, x ≥ 2

Fixing nut tightening torque: XT1 M12: ≤ 10 N.m, XT1 M18: ≤ 25 N.m, XT1 M30: ≤ 40 N.m

(1) These sensors do not incorporate overload or short-circuit protection and therefore, it is essential to connect a 0.4 A "quick-blow" fuse in series with the load (see page 37317/2).

Other versions

Please consult your Regional Sales office.

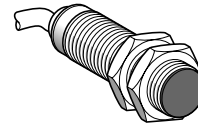
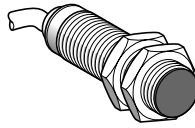
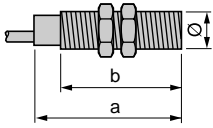
# Capacitive proximity sensors

For detection of conductive materials

Cylindrical type. Plastic case

d.c. or a.c. supply

## Sensors non flush mountable in support



Lengths (mm):  
a = Overall  
b = Threaded or plain section

a = 60  
b = 51.5  
Ø = M18 x 1

a = 60  
b = 51.5  
Ø = M18 x 1

	DC	AC
Nominal sensing distance (Sn)	8 mm	8 mm

## References

3-wire $\equiv$	PNP	NO	XT4 P18PA372	-
	NPN	NO	XT4 P18NA372	-
2-wire $\sim$		NO	-	XT4 P18FA262
		NC	-	-
Weight (kg)	0.100		0.100	

## Characteristics

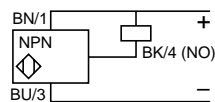
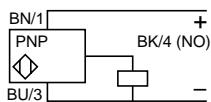
Connection	Pre-cabled, 3 x 0.34 mm <sup>2</sup> , length = 2 m		Pre-cabled, 2 x 0.34 mm <sup>2</sup> , length = 2 m
Degree of protection	Conforming to IEC 60529	IP 67	
Operating zone	0...5.8 mm		
Product certifications	CE		
Repeat accuracy	≤ 0.1 of Sr		
Differential travel	≤ 0.2 of Sr		
Operating temperature	- 25...+ 70 °C		
Output state indication	Yellow LED		
Rated supply voltage	$\equiv$ 12...24 V	$\sim$ 24...240 V (50/60 Hz)	
Voltage limits (including ripple)	$\equiv$ 10...38 V	$\sim$ 24...264 V (50/60 Hz)	
Switching capacity	0...300 mA with overload and short-circuit protection	5...300 mA (1)	
Voltage drop, closed state	≤ 2 V		≤ 5.5 V
Residual current, open state	-		1.5 mA / 120 V
Current consumption, no-load	≤ 10 mA		-
Maximum switching frequency	100 Hz	25 Hz	
Delays	First-up	≤ 30 ms	≤ 300 ms
	Response	≤ 5 ms	≤ 50 ms
	Recovery	≤ 5 ms	≤ 50 ms

## Wiring schemes, sensitivity adjustment

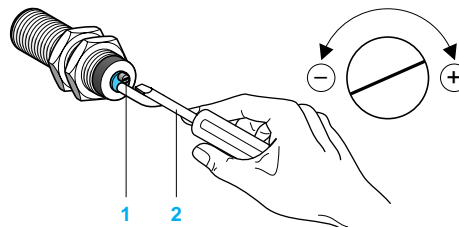
### 3-wire $\equiv$ , NO output

XT4 P●●PA372A

XT4 P●●NA372



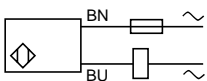
### Sensitivity adjustment



- 1 Adjustment potentiometer
- 2 Adjustment using suitable screwdriver

### 2-wire $\sim$ , NO or NC output

XT4 P●●F●262, XT4 L32F●262



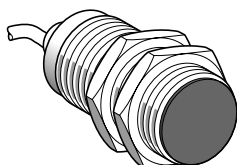
(1) These sensors do not incorporate overload or short-circuit protection and therefore, it is essential to connect a 0.4 A "quick-blow" fuse in series with the load (see page 37317/2).

# Capacitive proximity sensors

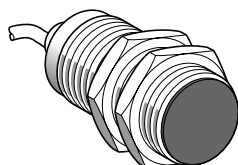
For detection of conductive materials

Cylindrical type. Plastic case

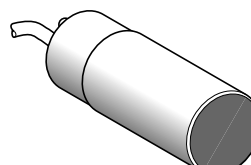
d.c. or a.c. supply



a = 60  
b = 51.5  
Ø = M30 x 1.5



a = 60  
b = 51.5  
Ø = M30 x 1.5



a = 80  
b = 60  
Ø = 32 plain

DC 15 mm	AC 15 mm	AC 20 mm
XT4 P30PA372	-	-
XT4 P30NA372	-	-
-	XT4 P30FA262	XT4 L32FA262
-	XT4 P30FB262	XT4 L32FB262
0.140	0.140	0.300
Pre-cabled, 3 x 0.34 mm <sup>2</sup> , length = 2 m	Pre-cabled, 2 x 0.34 mm <sup>2</sup> , length = 2 m	Pre-cabled, 2 x 0.34 mm <sup>2</sup> , length = 2 m
IP 67		IP 63
0...10.8 mm		0...14.4 mm
C€		
≤ 0.1 of Sr		
≤ 0.2 of Sr		
- 25...+ 70 °C		
Yellow LED		
~ 12...24 V	~ 24...240 V (50/60 Hz)	~ 110...220 V (50/60 Hz)
~ 10...38 V	~ 20...264 V (50/60 Hz)	~ 90...250 V (50/60 Hz)
0...300 mA with overload and short-circuit protection	5...300 mA (1)	15...250 mA (Ue = 110 V) (1) 15...150 mA (Ue = 220 V) (1)
≤ 2 V	≤ 5.5 V	≤ 9 V
-	≤ 1.5 mA / 120 V	≤ 7 mA
≤ 10 mA	-	-
100 Hz	25 Hz	10 Hz
≤ 30 ms	≤ 300 ms	≤ 300 ms
≤ 5 ms	≤ 50 ms	≤ 50 ms
≤ 5 ms	≤ 50 ms	≤ 15 ms

## Setting-up

Minimum mounting distances (mm)	Side by side	Face to face	Facing a metal object	Mounted in support
XT4 P18 non flush mountable	e ≥ 40	e ≥ 50	e ≥ 80	d ≥ 54, h ≥ 15
XT4 P30 non flush mountable	e ≥ 60	e ≥ 80	e ≥ 100	d ≥ 90, h ≥ 20
XT4 L32 non flush mountable	e ≥ 60	e ≥ 100	e ≥ 100	d ≥ 96, h ≥ 25

Fixing nut tightening torque: XT4 P18: ≤ 4 N.m, XT4 P30: ≤ 10 N.m

(1) These sensors do not incorporate overload or short-circuit protection and therefore, it is essential to connect a 0.4 A "quick-blow" fuse in series with the load (see page 373172).

## Other versions

Please consult your Regional Sales office.

# Capacitive proximity sensors

For detection of insulated materials  
Block type, form C. Plastic case, plug-in. Turret head  
d.c. or a.c. supply

## Sensors flush mountable in support



Nominal sensing distance (Sn)		15 mm	15 mm	
<b>References</b>				
3-wire $\equiv$	PNP	NO + NC	XT7 C40PC440	–
	NPN	NO + NC	XT7 C40NC440	–
2-wire $\sim$ programmable		NO or NC	–	XT7 C40FP262
Weight (kg)		0.220	0.220	
<b>Characteristics</b>				
Connection		Screw terminals, clamping capacity 4 x 1.5 mm <sup>2</sup> (1)	Screw terminals, clamping capacity 3 x 1.5 mm <sup>2</sup> (1)	
Degree of protection	Conforming to IEC 60529	IP 67		
Operating zone		0...10.8 mm		
Repeat accuracy		≤ 0.1 of Sr		
Product certifications		UL, CSA, CE		
Differential travel		≤ 0.2 of Sr		
Operating temperature		- 25...+ 70 °C		
Output state/supply indication		Yellow LED: output + green LED: supply	Yellow LED: output	
Rated supply voltage		$\equiv$ 12...48 V	$\sim$ 24...240 V (50/60 Hz)	
Voltage limits (including ripple)		$\equiv$ 10...58 V	$\sim$ 20...264 V	
Switching capacity		0...200 mA with overload and short-circuit protection	5...350 mA (2 A inrush) (2)	
Voltage drop, closed state		≤ 2 V	≤ 5.5 V	
Residual current, open state		–	≤ 1.5 mA	
Current consumption, no-load		≤ 10 mA	–	
Maximum switching frequency		100 Hz	25 Hz	
Delays	First-up	≤ 30 ms	≤ 150 ms	
	Response	≤ 5 ms	≤ 20 ms	
	Recovery	≤ 5 ms	≤ 30 ms	

(1) Cable gland not included with sensor. For suitable n° 13 plastic cable gland (XSZ PE13), see page 37317/2.

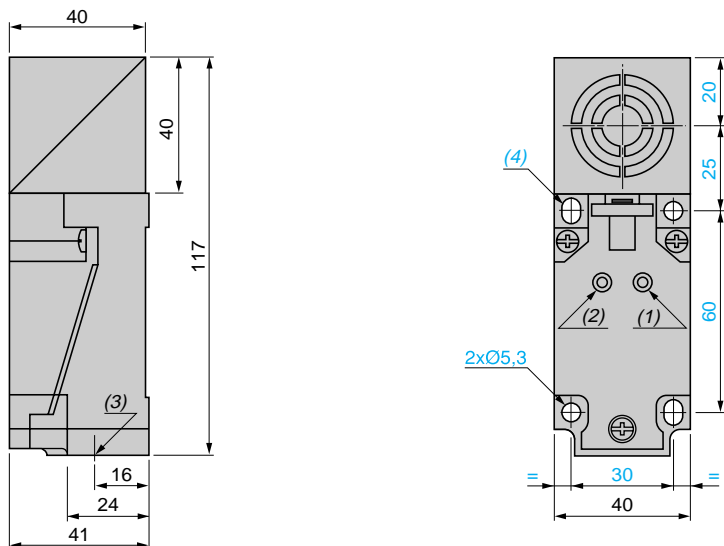
(2) These sensors do not incorporate overload or short-circuit protection and therefore, it is essential to connect a "quick-blow" fuse in series with the load (see page 37317/2).

# Capacitive proximity sensors

For detection of insulated materials  
Block type, form C. Plastic case, plug-in. Turret head  
d.c. or a.c. supply

## Dimensions

XT7 C40●●●●●●



- (1) Output LED.
- (2) Supply LED (depending on model).
- (3) 1 tapped entry for n° 13 plastic cable gland.
- (4) 2 elongated holes  $\varnothing 5.3 \times 7$ .

## Setting-up

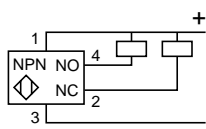
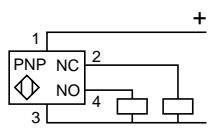
Minimum mounting distances (mm)	Side by side	Face to face	Flush mounting
<b>XT7 flush mountable</b>	$e \geq 40$	$e \geq 120$	

To avoid interference by the immediate surroundings, it may be necessary to reduce the sensitivity when flush mounting the sensor.

## Wiring schemes

### 3-wire ---

NO + NC output



### 2-wire ~ programmable

NO or NC output, depending on position of link

